



Meeeco Consultancy Company

MEECO Innovative Design Solutions



www.meeeco-consulting.com



Meeeco Consultancy Company

About Us

MEECO Consultancy Group (Middle East Engineering Consulting previously) was incorporated in 2012. MEECO is an ISO 9001-2015 Certified Organization & is one of the professional power system consulting service firm with dedicative power system experts working as on date. The core competence of MEECO is in the area of power system consulting, power system analysis, consultancy in Power Distribution, design and analysis, design & development of complete solutions for SCADA, Industrial Automation & engineering simulation software. Our global expertise enables us to provide multi-disciplinary services in power sector with a range of working experience with Electrical utilities throughout Egypt, Saudi Arabia, Jordan, Iraq, Congo and Nigeria. MEECO has the resources to provide in-depth expertise in framing the Scope of this assignment





Meeeco Consultancy Company

Table of contents

Preface	01
Core strengths	02
Service portfolio	03
Scope of service	04
Organization chart	05
QMS	06
Software	07
Projects location	14
Some of our projects all over the world	15
Certificates	30



Meeeco Consultancy Company

1-Preface

MEECO is a multi-disciplinary design firm incorporated in 2008. Since inception, MEECO has established itself as one of prominent design engineering firm in the Middle East.



MEECO undertakes comprehensive, integrated engineering and design works in the field of Electrical, Electrical-Protection, Mechanical, Architecture, Structure and Civil design along with Construction Management Services for Substations, Transmission lines, Electro-Mechanical and Industrial Projects



MEECO is well equipped with highly skilled managerial & technical personnel. It provides technical support with highest quality through application of latest engineering softwares. Our design begins with concept development and continues through construction documentation with full participation of our client at various stages of the project.



MEECO has successfully executed design and engineering work for many projects for Saudi Electricity company (SEC) as a sub contractor for many main contractors for transmission and distribution system in the voltage range from 13.8kV to 380kV





Meeeco Consultancy Company

2-Core Strengths

✦ **People** The greatest strength of our success is our growing team. Through continual development and hard work, we ensure that our people have the cutting edge skills and demonstrate the highest professional standards.

✦ **Relationships** We are highly committed to develop long lasting partnerships with our valuable public and private sector customers, suppliers and principals. standards.



✦ **Leading Edge Technology** Through our relationships with SEC, international clients and joint venture partners, our design teams have the benefit of being able to share the most up to date technology and operational knowledge.

✦ **Service & Delivery** MEECO is well committed date with customers fairly and professionally by establishing flexibility and adaptability in our approach, however 'On-time exceeding the client's expectation' is our delivery motto, understanding the clients' frequent rush requirements, we are very well committed to meet the tightest delivery schedules.



Meeeco Consultancy Company

3-Service Portfolio

MEECO are a team of innovative engineering professionals diversified into many areas where our design and project management skills can be applied to the benefit of the client.





Meeeco Consultancy Company

Electrical Power Substation

MEECO provide design and engineering services for Civil, Electrical, Mechanical and Protection design for utility, industrial and other consumer substations of medium, high, and extra high voltages up to 380kV. Our engineering covers GIS, AIS indoor and outdoor substations.



Transmission Lines

MEECO's expertise in the area of overhead transmission line design covers Steel monopole structures as well as Steel latticed structures.



Electrical System Studies

MEECO's expertise in that area includes but not limited to the following:

- Insulation co-ordination studies.
- Very Fast Transient Overvoltage (VFTO) studies.
- Transient Enclosure Voltage (TEV) studies.
- Ferro-resonance simulation studies.
- Neutral to Earth Resistance (NER) sizing studies.





Meeeco Consultancy Company

4-SCOPE OF SERVICES

MEECO core service includes designing and Engineering for EHV, HV, MV Substations and all low voltage and related applications development. We have successfully designed Electrical Substations and developed applications for clients in different vertical markets. You can bank on our experience, creativity and technical expertise to enhance your business and increase the overall efficiency of your enterprise.



Electrical design



Protection design



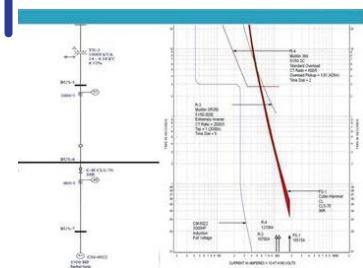
Civil and structural design



Mechanical design



Transmission line



Electrical system studies



Meeeco Consultancy Company

ELECTRICAL DESIGN

- Power plant engineering & balance of plant electrical.
- Switching and transmission substations up to 380 KV.
- Sub transmission and distribution substations.
- Protection control, monitoring and supervisory system.
- Protective devices and relay coordination.



PROTECTION DESIGN

- Preparation of substation base design (Substation main one line diagram SLD, Protection logic diagram PLD,.....ETC)
- Preparation of all substation required signals / Alarms for (SAS, SER, SCADA, TFR and Annunciation) systems.
- Base & Detail Design preparation / review of the Control and Protection panels.
- Preparations of substation relay setting calculation & CT/VT sizing calculation.
- Power system analysis studies.
- Modify the existing protection and control schemes for old substations to be matching with the new protection scheme requirement.
- Preparation of the panels interfacing and terminations schedule and termination charts.





Meeeco Consultancy Company

CIVIL AND STRUCTURAL DESIGN

- Design of turbine halls, control and auxiliary buildings.
- Design of GIS switchgear buildings & control buildings.
- Design of oil retention tanks, bases and dike walls.
- Design of transmission and communication towers, gantries and associated foundation works.
- Site development layouts.
- Pipe rack designs.



MECHANICAL DESIGN

- System engineering for power plants.
- Piping engineering for power & process plants.
- HVAC System.
- Fire detection and alarm system.
- Plumbing system.
- Building mechanical services.





Meeeco Consultancy Company

TRANSMISSION LINE

- Transmission line design philosophy & design basis.
- Review of survey drawings for the transmission lines.
- Sag & tension calculations with sag template/stringing chart for conductor and ground wire.
- Plan, profile and critical crossing details
- Line parameters calculation and Inputs for tower/pole design.

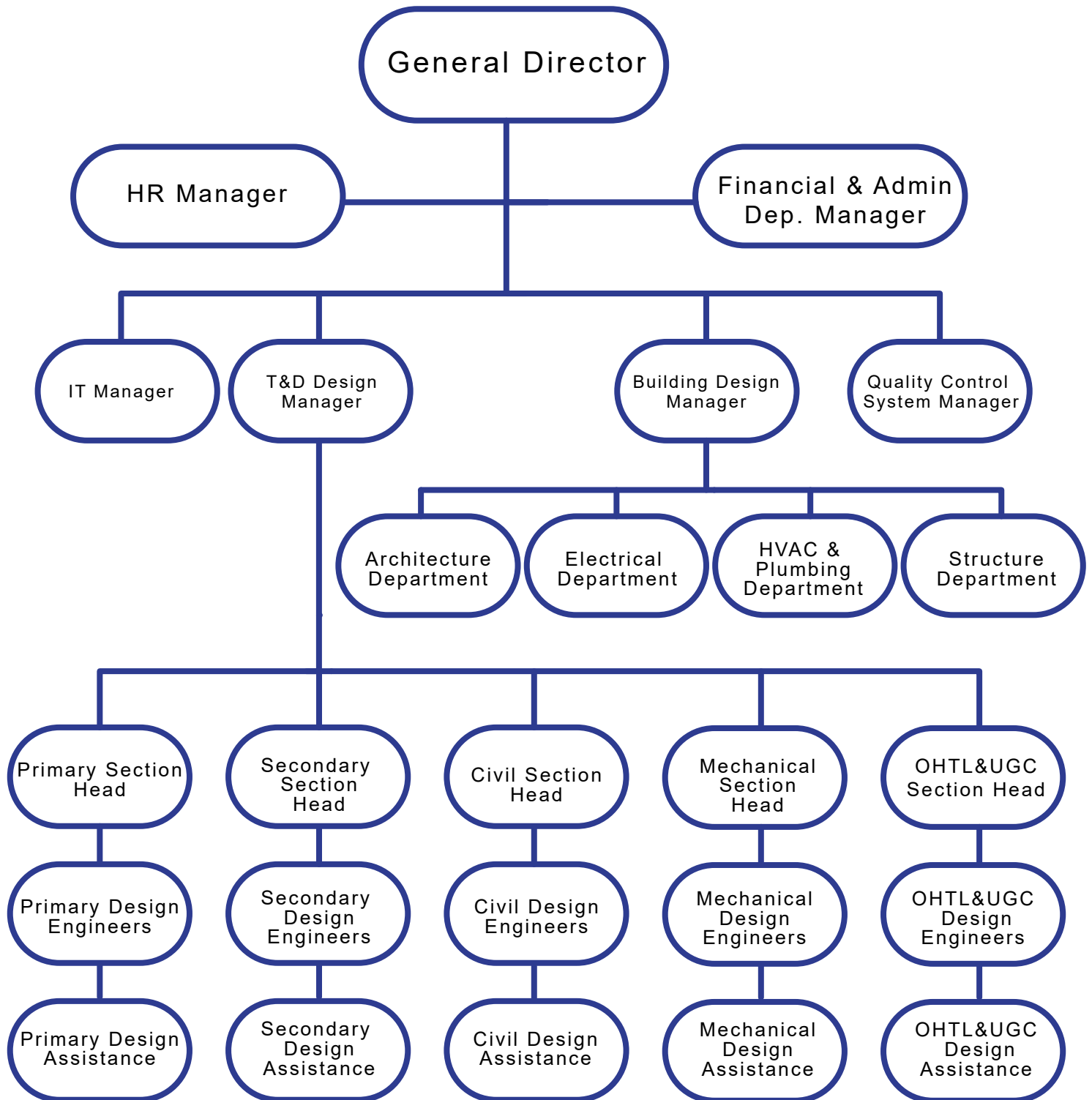


ELECTRICAL SYSTEM STUDIES

- EMTP studies: Switching transients, insulation coordination, ferro resonance, harmonic analysis, capacitor bank and reactor sizing.
- Investigation and rehabilitation of existing transmission & distribution system, power plant and industrial protection relay setting.
- Substations ground mat design through multi-layer modeling for solving complex problems with exceptional details and accuracy.
- Study of EM interference from transmission lines to pipe lines.



5-Organization chart



6-Quality Management System

MEECO Quality Management System is one of our core business processes, providing us with the necessary structure, guidelines and check points, to ensure that all project deliverables meet the requirement of the project, keeping in view our scope of works.

QUALITY POLICY

MEECO is committed to provide design services of prime quality, to the complete satisfaction of our customers with the highest level of professionalism and dedication.

This objective is achieved through our committed highly skilled staff and continuous improvement of proficiency level by employing state of the art tools with consistent motivation of company management.

All design activities starting from design input and ending at design validation are implemented and controlled by the design dept, as per quality procedure.

The Company maintains a program to educate and train all employees in their individual responsibilities and quality assurance requirements.

The management team is fully committed to the principle of quality assurance as an integral part of the Company's operations. The Management require the active participation of every member of the Company in continuing to make quality a prime requirement of every task.



Meeeco Consultancy Company

7-SOFTWARE

Mathcad 2000 & 14

Auto-Cad 14- 2010

Micro-station v8

ETAP power station

Dialux software

Saudi Lighting Software

Elite CHVAC load estimation

STAAD Pro.

Elite Software

MS PROJECT

CymGRD

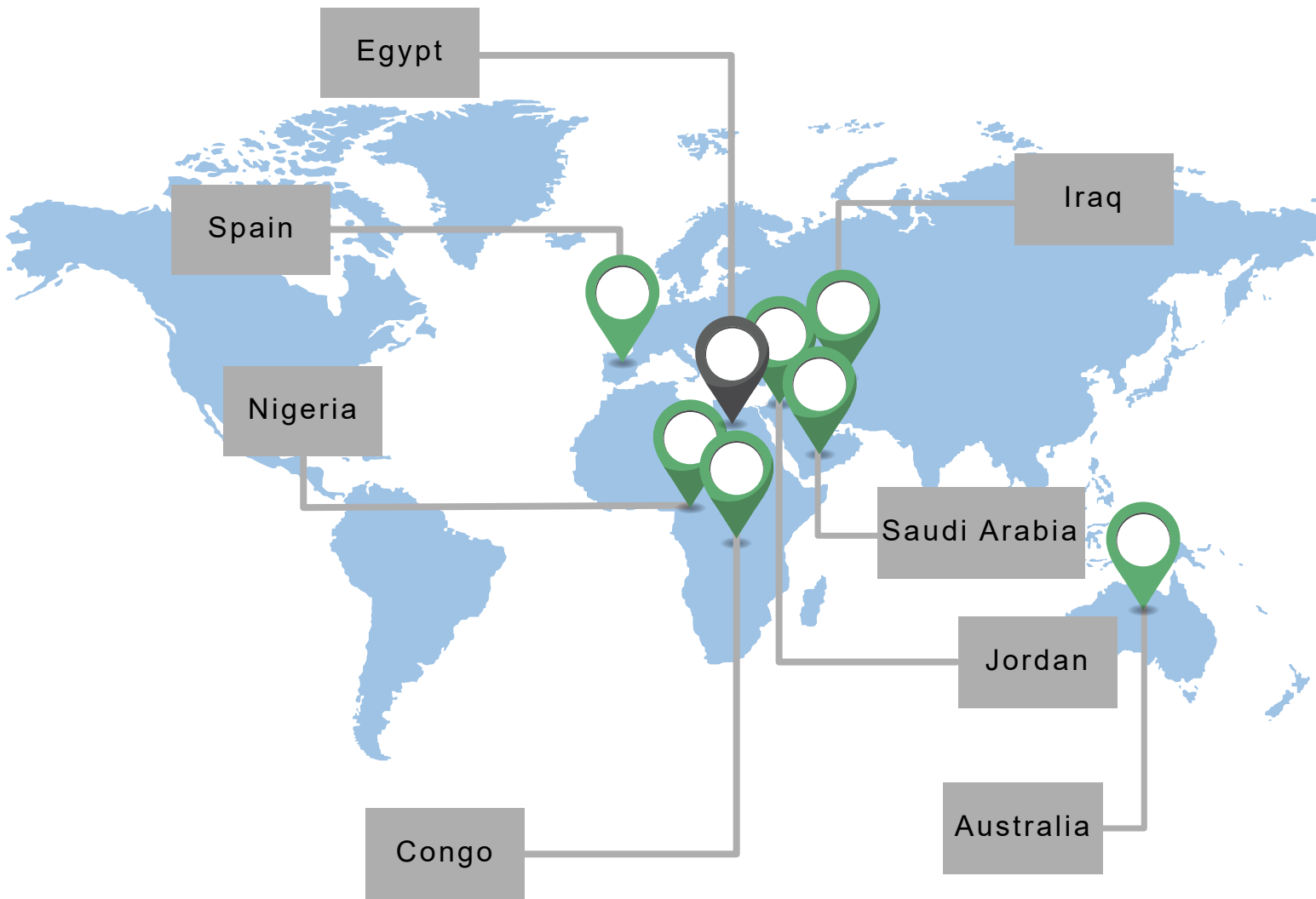
Elite Duct sizing calculation

Elite firefighting

PLS CAD



8-Projects location



Head office (cairo,Egypt)



Nigeria



Congo



Spain



Jordan



Iraq



Saudi Arabia



Australia



Meeeco Consultancy Company

9-Some of our projects all over the world

Saudi Arabia Projects.

Sr.No.	PROJECT NAME	Country	Contractor
1	Construction of new 380/132/13.8 KV S/S 9031 (Hail-2) and R.E of S/S 9030 & Al Jouf SS	Saudi Arabia	Siemens
2	Reinforcement of 380/132KV S/S # 9008	Saudi Arabia	Siemens
3	Construction of new 380/132/33 KV S/S # 9028	Saudi Arabia	Siemens
4	Construction of new 380/132/13.8 KV S/S # 9039	Saudi Arabia	Siemens
5	Expansion of existing sharafiya BSP (9004) 380/132KV (primary scope).	Saudi Arabia	Siemens
6	Replacement of Distance relay with over current and earth fault relay (96 substations)	Saudi Arabia	ETAC
7	Installation Of 33kv Bus Bar ProtectionAt (30) Substation	Saudi Arabia	ETAC
8	Replacement of 13.8kv Panels at S/S 8025	Saudi Arabia	ETAC
9	Replacement Of 33kv Panels At S/S 8601-7604	Saudi Arabia	ETAC
10	Under Frequency Load shedding Scheme at 5 S/Ss (8781, 8782, 7780, 7781 & 7782) in wadi al-Dawasir area	Saudi Arabia	ETAC
11	Reinforcement of existing 33/13.8KV substation SS# 7700, 7180, 7707, 7760, 7821 & 7804.	Saudi Arabia	ETAC
12	Replacement of 13.8KV panels Sec: A,Bat S/S 8082.	Saudi Arabia	ETAC
13	Replacement of existing two transformers with rated 33/13.8kV for 132/33/13.8kV S/S 8918	Saudi Arabia	ETAC
14	Construction of new 33/13.8kV S/S 7753	Saudi Arabia	ETAC
15	Construction of new 33/13.8kV S/S 7922	Saudi Arabia	ETAC
16	Protection Modification of 33KV Feeder units at S/S 8602-8600-7600	Saudi Arabia	ETAC



Meeeco Consultancy Company

Saudi Arabia Projects.

Sr.No.	PROJECT NAME	Country	Contractor
17	Relay Setting Calculation and Co-ordination study for Al Batha project.	Saudi Arabia	Delta Co.
18	CT sizing and Relay setting calculations for UGFs protection of S/S 9029, 8072, 8064, 8201, 8110, 8079, 8114, 8111, 8061 & 8828	Saudi Arabia	SEP
19	Reinforcement of S/S # 7011 & 7091	Saudi Arabia	Jal International
20	Construction of new 33/13.8kV S/S 7822	Saudi Arabia	Jal International
21	HAVC Design for 132KV Residential substation at Waad Alshamal	Saudi Arabia	ETAC
22	Construction of new 132/13.8KV S/S #8163	Saudi Arabia	Al Arrab Co.
23	Construction of new 132/13.8KV S/S #8168	Saudi Arabia	Al Arrab Co.
24	Construction of new 132/13.8KV S/S #8256	Saudi Arabia	Al Arrab Co.
25	Construction of new 132/13.8KV S/S #8211	Saudi Arabia	Al Arrab Co.
26	Reinforcement of 132/33KV S/S # 8500	Saudi Arabia	Al Arrab Co.
27	Construction of new 132/33KV S/S # 8860	Saudi Arabia	Al Arrab Co.
28	Relay Setting Calculation-ITCC	Saudi Arabia	ETAC
29	Hawiyah Substation Project - Steel Structure Design	Saudi Arabia	BEMCO
30	Construction of 33-13.8KV substation 7821 in Al-Ghat	Saudi Arabia	ETAC
31	Construction of rawaq, 132/13.8kv substation # 8841, in buraydah	Saudi Arabia	Al Babtain Co.
32	Al-Artawyah 132/33kv substation # 8525	Saudi Arabia	Al Babtain Co.



Meeeco Consultancy Company

Saudi Arabia Projects.

Sr.No.	PROJECT NAME	Country	Contractor
33	Al Qaid 132/33/13.8kv substation # 8925	Saudi Arabia	Al Babtain Co.
34	Buraydah center-2 132/13.8kv substation #8845	Saudi Arabia	Al Babtain Co.
35	Reinforcement of existing 132/33kv substations # 8810 (sajir) by installing new 132kv GIS in Al-Qassim area.	Saudi Arabia	Al Babtain Co.
36	Reinforcement of 132/33KV S/S # 8814 (an bin fuhayed) by installing new 132kv GIS in Al-Qassim area	Saudi Arabia	Al Babtain Co.
37	Protection modification of 132KV circuits with total numbers of 23 feeders.	Saudi Arabia	SEP
38	CT sizing and Relay Setting Calculations for 110KV MKN substation.	Saudi Arabia	SEP
39	230kv Safaniah SS Secondary design - SVC Safaniah Project.	Saudi Arabia	Siemens
40	Reinforcement Of Al-Naja 110kv substation	Saudi Arabia	Nesma/Jawda
41	Reinforcement 33/13.8kv S/S-7751	Saudi Arabia	Innovative System
42	Construction of Hunayn 380kv BSP	Saudi Arabia	Siemens
43	Reinforcement of MARJAN GOSP -2, MARJAN GOSP -3 & MARJAN ONSHORE Substations	Saudi Arabia	McDermott/ Al Fanar
44	Replacement Of 33 Kv Switchgears At Ss Nos. 7909, 7911 & 13.8kv Switchgears At Ss No. 7912 In Hail	Saudi Arabia	Al Haif Co.
45	HVAC & Plumbing and Lighting & small power Design - Fire pump room, LPCO2 room 1&2	Saudi Arabia	Siemens
46	Al-majmaah SS-7213 relay setting	Saudi Arabia	Haif Co.
47	Rehabilitation of Bani Najjar 110/13.8KV SS	Saudi Arabia	Siemens
48	DHAFER 33kv S/S Extension	Saudi Arabia	Innovative System (Isys)



Meeeco Consultancy Company

Saudi Arabia Projects.

Sr.No.	PROJECT NAME	Country	Contractor
49	SAGRAH 33kv S/S Extension	Saudi Arabia	Innovative System (Isys)
50	Construction of NEW SADEA 33/13.8 kVA Substation	Saudi Arabia	EXAP Contracting Co.
51	Shoaiba Quaiza B Water Transmission System, 110/13.8Kv HV substation	Saudi Arabia	ALISHAR Contracting Co.
52	Reinforcement of existing 132/33/13.8kv S/S # 8703 in Kharj area, Reliability Enhancement for SS of groups 9053 & 9012 in Riyadh City, and Reliability Enhancement for SS's of group 9008 and 9020 groups in Riyadh city.	Saudi Arabia	Capital Light Co.
53	132KV D/C OHTL FOR REINFORCEMENT OF MUHAYIL WEST MUHAYIL NORTH, & 32KV D/C OHTL FOR INTEGRATION OF SHARURAH 380KV AND 132KV NETWORKS	Saudi Arabia	SAMA Co.
54	Deep Underground Station Line1 – Station 1B1	Saudi Arabia	Electro-Mechanical Work Co.
55	Connection of new ashbailyah BSP SS # 9038 WITH 132kV network with S/S 8142 (Part-1), in north east area of riyadh	Saudi Arabia	IBN Omairah Contractin co.
56	Connection interconnection of 380/110KV yanbu -3 swcc BSP with 110KV yanbu & badr network	Saudi Arabia	IBN Omairah Contractin co.
57	Construction of Two (2) 132kV Terminal Compounds, Installation of 132kV U/G Cables, Protection Works and Communication Works for 132kV Network for Salboukh BSP# 9018	Saudi Arabia	SSEM
58	Construction of New 132kv DC OHL from New Al-Dillam S/S 8718 up to S/S 8714	Saudi Arabia	Capital Light



Meeeco Consultancy Company

Saudi Arabia Projects.

Sr.No.	PROJECT NAME	Country	Contractor
59	Riyadh Water Enhancement Program - 14 P-House	Saudi Arabia	Al Fanar
60	Connection of Hail Housing S/S 8929 with 132kv Network, in Hail Area	Saudi Arabia	Capital Light Co.
61	Installation of 115KV cables for integration of AL-HASSA HOUSING 115/13.8KV	Saudi Arabia	Capital Light Co.
62	Connection of New Al Malqaa S/S 8278 with 132 KV Network, Riyadh Area	Saudi Arabia	Keir International Co.
63	Construction of a 132kv DC OHL from new S/S 8312 up to BSP S/S 9018 for Housing Project at Aloynah	Saudi Arabia	Capital Light Co.
64	Installation of Four (4) 380kv, 60MVAR Line Connected Reactors for the proposed Hail 3 – Aljouf1 D/C OH Line at Hail 3 BSP side	Saudi Arabia	Siemens Energy
65	Construction of 132kv D/C OHTL to Loop In & Out existing OHTL circuits 8061-8070 to S/S 8375, in Nemar Area, Riyadh	Saudi Arabia	Capital Light Co.
66	Interconnection Reinforcement of Shafa Substation, Taif Area	Saudi Arabia	ASAMCO Co.
67	132kV T.L - JOUF PROJECT	Saudi Arabia	ETAC
68	Design of 110KV LCC Panels at Jeddah and Makkah substations, (total five substations)	Saudi Arabia	Al Fanar
69	Misk School, Misk City, Power Supply Arrangement	Saudi Arabia	Misk School
70	Construction of SVC at Madinah East	Saudi Arabia	Siemens
71	Construction of SVC at Hail and Jouf	Saudi Arabia	Siemens
72	Steel Structure Design for SVC at Al Kharj 132/13.8KV S/S 8712	Saudi Arabia	Siemens



Meeeco Consultancy Company

Saudi Arabia Projects.

Sr.No.	PROJECT NAME	Country	Contractor
73	Steel Structure Design for SVC at Safanyiah 380/220KV SS	Saudi Arabia	Siemens
74	Standby power source to central control room of jizan power plant	Saudi Arabia	Al Haif Co.
75	UP-Grading of the stand-by power station at the College of Medicine, King Khaled University Hospital (KKUH) at King Saud University	Saudi Arabia	Delta Co.
76	Integration Of New Steam Unit With 1x1c-1000 Mm ² 380kv XLPE Copper Cable At 380kv Hail Bsp # 9030	Saudi Arabia	TIT/AJEC
77	Extension of Al Ruqi power plant	Saudi Arabia	Delta Co.
78	Salwa Power Plant House Extension	Saudi Arabia	Saudi Arabian Trading & Engineering Co. (SATEC)
79	Qurayyah Combined Cycle Project - As Built Drawings Preparations	Saudi Arabia	BEMCO
80	PP10 Combined Cycle Project - As Built Drawings Preparations	Saudi Arabia	BEMCO
81	Al Durrah Land Port Backup Power Supply Project	Saudi Arabia	EXAP Contracting Co.
82	Al Bathaa Land Port Backup Power Supply Project	Saudi Arabia	Al Fanar
83	Construction of ABHOUR (ABH) 380/110/13.8kV BSP, control and Protection panels design.	Saudi Arabia	AL Fanar



Meeeco Consultancy Company

Saudi Arabia Projects.

Sr.No.	PROJECT NAME	Country	Contractor
84	Construction of Jafurah 380/230kV BSP, Protection panels design.	Saudi Arabia	AL Fanar
85	Design of 110KV LCC Panels at Jeddah and Makkah substations.	Saudi Arabia	AL Fanar
86	Interconnection of new Um Al-Joud 380/110kv BSP with 110kv Makkah Network (Phase-1).	Saudi Arabia	AL Fanar
87	Construction of Industrial City2- Sanabel BSP Backup connection, Jeddah-WOA.	Saudi Arabia	AL Fanar
88	Reinforcement of Thuwal Town – KAUST2 Connection, Jeddah –WOA.	Saudi Arabia	AL Fanar
89	Construction of Wadi Laban 32/13.8kV substation # 8294 and Connection of Wadi Laban substation #8294 with 132kv network in Riyadh city.	Saudi Arabia	Al Babtain Co
90	Construction of Hittin 132/13.8kv Substation # 8215 in Riyadh City and Connections of Hittin S/S 8215 with 132kv network, in Riyadh city.	Saudi Arabia	Al Babtain Co
91	Construction of Al-Malqa-2 32/13.8kv substation # 8279 and Connections of Al Malqa-2 s/s 8279 with 132kv network, in Riyadh city.	Saudi Arabia	Al Babtain Co
92	Construction of Wadi Arada 132/13.8kV Substation in Baha	Saudi Arabia	Al Gihaz Holding Co
93	Construction of Al-Qairwan 132/13.8kv H 8221 Substation	Saudi Arabia	Haif Co
94	Construction of a New 110kV Double Circuit Overhead Transmission Line from Thageef to Adam, TAIF area	Saudi Arabia	Giza Arabia Co



Meeeco Consultancy Company

Saudi Arabia Projects.

Sr.No.	PROJECT NAME	Country	Contractor
95	Connection of Al-Aridh BSP#9062 with 132kv Network in Riyadh City.	Saudi Arabia	Keir International Co
96	Connection of Al-Nazim BSP#9079 with 132kv Network and Extension of 132kv GIS at substation # 8141 in Riyadh area,	Saudi Arabia	Keir International Co
97	Interconnection of AJM-1 (new Al Jamoom) substation with AJM-2 SS, Makkah-WOA,	Saudi Arabia	AL Fanar
98	Construction of Roshn Real Estate Project-2, 132/13.8kv Substation # 8141 & Extension of 132kv GIS at Substation # 9046 and Substation # 8259,	Saudi Arabia	Al Ojaimi Group
99	Construction of new 132/13.8kv substation for industrial city in Tabuk	Saudi Arabia	AL Fanar
100	Refurbishment of Al-Rass 132/33kv Substation # 8803 in Qassim Area	Saudi Arabia	Isys
101	Refurbishment of Existing 13.8kV Metal Clad Switchgear installed at Rahima Sub-81, Protec-	Saudi Arabia	Al Fanar
102	Construction of HENAKIYAH (HKPV) PV 380/110kV BSP, Protection panels	Saudi Arabia	Al Fanar
103	Construction of Waad Al Shamaal wind 380/132KV BSP, Protection panels	Saudi Arabia	Al Fanar
104	Refurbishment of existing 13.8kV Metal Clad Switchgear installed at Chicken Ranch Sub-83 – Jubail Project, Protection panels design	Saudi Arabia	AL Fanar
105	Replacement of old 13.8kv Switchgear at Center " Substation Jeddah (CTR)	Saudi Arabia	Isys



Meeeco Consultancy Company

Saudi Arabia Projects.

Sr.No.	PROJECT NAME	Country	Contractor
106	Construction of new 13.8kv Switching Station S/S 85259 for feeding Alouja Palace in Riyadh City	Saudi Arabia	Rawasi Al Bina Investment Co
107	Diesel 14X1400KVA for Future Cities Ones (FCO)/ SATCO	Saudi Arabia	LBP
108	Construction of new 132/13.8kv Wadi" Laban, Hittin, and Al-Malqa-2 Substations (Control & Protection panels design)	Saudi Arabia	Al Fanar
109	Design Big City S/Ss Central and West	Saudi Arabia	Al Fanar
110	Construction of new 132/13.8kv" Qirwan-3 Substation (Control & Protection panels design)	Saudi Arabia	Al Fanar
111	Control and Protection panel" Engineering for new 110/13.8kv "Rua Al Madinah S/S (RAMD-2A)	Saudi Arabia	Al Fanar
112	Replacement of 132 KV LPOF U/G cable circuit 9014-8058(B) in Riyadh Area	Saudi Arabia	Keir International Co
113	Control and Protection panel Engineering for new Roshan Real Estate SS 8141	Saudi Arabia	Al Fanar
114	Dammam Stadium 115/13.8KV Substation	Saudi Arabia	PA Cost International
115	Construction of AL-MASHRIQYIA 132/13.8kV	Saudi Arabia	Al Fanar
116	ALOJAIMI ALULA RCU MUGHAYRA	Saudi Arabia	Al Fanar



Meeeco Consultancy Company

Saudi Arabia Projects.

Sr.No.	PROJECT NAME	Country	Contractor
117	ALOJAIMI ALULA RCU EASTERN 132_33kV_PRPTN	Saudi Arabia	Al Fanar
118	Control and protection panels Engineering of 15 S/SS	Saudi Arabia	Al Fanar
119	Control and Protection panel Engineering for Al-Shifa Housing 132/13.8kV SS # 8285	Saudi Arabia	Al Fanar
120	Construction of new 132/13.8kv substation for Ma'aden beneficiation plant at Hazm Al-Jalamid	Saudi Arabia	SAMA Energy
121	Control and protection panels Engineering of Jazera Royal Place 110/13.8KV substation	Saudi Arabia	Al Fanar
122	Control and protection panels Engineering of Salam Royal Palace (SRP1) 110/13.8KV substation	Saudi Arabia	Al Fanar
123	Control and protection panels Engineering of 132/33kV Asir Modon-2 S/S in Asir Region	Saudi Arabia	Al Fanar
124	Construction of 34.5/13.8kv substation	Saudi Arabia	EXAP Contracting Co
125	Construction of New 132/33kv Substation # 8536 for Riyadh Cement company factory in Nisah Riyadh Rural Area	Saudi Arabia	SAMA Energy
126	Construction of City Cement 132/33KV Substation # 8537 in Marat Riyadh Rural Area	Saudi Arabia	SAMA Energy
127	Construction of Al-Nabhaniah 132/33/13.8KV " Substation # 8864	Saudi Arabia	SAMA Energy



Meeeco Consultancy Company

Saudi Arabia Projects.

Sr.No.	PROJECT NAME	Country	Contractor
128	Control and protection panels Engineering of Southern 380/132/33/13.8kV BSP	Saudi Arabia	Al Fanar
129	Control and Protection panel Engineering for Qanadeel 380-110kV BSP	Saudi Arabia	Al Fanar
130	Replacement of existing wooden (AML-115)" Poles 115kv Overhead Transmission Lines between Shedgum PP & RWPS 3 substations	Saudi Arabia	Al Haider Co
131	Replacement of Existing Wooden Poles 115kv OHTLS between Uthmaniyah PP, Uthmaniyah 61, Hawiyah BSP, Haw WI W5 And between Mahasen BSP, Ghassaniyah, Mutairifi Substations	Saudi Arabia	Al Haider Co
132	CONSTRUCTION OF DHAHYAH 380/132/13.8KV BSP & EXPANSION OF JRP 380KV BSP	Saudi Arabia	Al Fanar
133	Construction of 33 Kv OHLs between new Al-Adharh S/S and Abu Ajram S/S	Saudi Arabia	Sahm Balady Contracting Co
134	Modification of Existing MV Network at Spark City	Saudi Arabia	Giza Arabia Co
135	Construction of new 132/13.8KV substation for Northern Cement Company factory in Turaif-NEOA	Saudi Arabia	SAMA Energy
136	Construction of new 132/13.8kv" Substation for Jouf Cement Company "factory in Turaif-NEOA	Saudi Arabia	SAMA Energy
137	Replacement of 110kv underground cable circuit Gishlah (11) - Zahir (10) in western operating area	Saudi Arabia	METS



Meeeco Consultancy Company

Saudi Arabia Projects.

Sr.No.	PROJECT NAME	Country	Contractor
138	Replacement of two existing 110 KV LPOF underground cable to XLPE for circuit TPS01 - MSR06 & TPS04-MSR07 located	Saudi Arabia	METS
139	Replacement of 110kV LPOF Underground Cable circuits TPS10-AST3 & TPS11-AST5 in Western Operating Area	Saudi Arabia	METS
140	Refurbishment of 110kv LPOF underground cables between Masarrah & Al Hada substations in WOA	Saudi Arabia	METS
141	Replacement of 110kv LPOF underground cable circuit Zahir (04) – Al Mansoor (06) in western operating area	Saudi Arabia	METS
142	Extension work at Abu Hadriyah substation with rerouting of overhead transmission lines	Saudi Arabia	NESMA
143	Replacement of existing wooden poles 115kv overhead transmission lines between North Uthmaniyah 52, UGOSP1, RWPS 4, Uthmaniyah PP, UGOSP2 & UGOSP6 substations in Al Hassa Area.	Saudi Arabia	AL OJAIMI GROUP
144	Construction of Alkhalidyah 132/13.8Kv Substation in Arar	Saudi Arabia	HAIF CO.
145	Construction and connection for SAMTAH-PV (SAMTPV) 380/132 KV BSP	Saudi Arabia	AL FANAR
146	Replacement of 132kV LPOF UGC Circuits 8294-8051 and 8044-9004(8386)	Saudi Arabia	Sahm Balady Contracting Co.
147	Construction and Connection of New Marabah 132/33 kV Substation	Saudi Arabia	AL OJAIMI GROUP
148	132Kv UGC Design & Gantry Structure and Foundation Design - Jouf	Saudi Arabia	SAMA ENERGY
149	132Kv UGC Design & Gantry Structure and Foundation Design - Maaden	Saudi Arabia	SAMA ENERGY



Meeeco Consultancy Company

Saudi Arabia Projects.

Sr.No	PROJECT NAME	Country	Contractor
150	132Kv UGC Design & Gantry Structure and Foundation Design - Northern	Saudi Arabia	SAMA ENERGY
151	Reinforcement of connection lines between Hudaib S/S and Zallum S/S	Saudi Arabia	SKY FIELD COMPANY
152	Construction of Tabuk East 132/33Kv Substation and Construction of 132kV D/C OHTL in Tabuk, WOA	Saudi Arabia	AL BABTAIN CO.
153	Replacement of the existing 132/33/13.8Kv Tabuk S/S#4 by Constructing A new Substation - Tabuk City	Saudi Arabia	AL BABTAIN CO.
154	Addition of 13.8kv circuit breakers at existing substations in Dammam.	Saudi Arabia	AL OJAIMI GROUP
155	Construction of 115/13.8kV New Batha SS	Saudi Arabia	HAIF CO.
156	Construction of Al-Awali 132/13.8Kv Substation # 8361 - Riyadh City	Saudi Arabia	AL BABTAIN CO.
157	Construction of Al Nahdah 115/13.8kv Substation	Saudi Arabia	PA COST INTERNATIONAL
158	Construction of 132kV Under Ground Cable Connection for Al-Awali Substation# 8361 with Network in Riyadh City	Saudi Arabia	CAPITAL LIGHT
159	Interconnection of Nawaryah Substation with Makkah North BSP, Makkah-WOA	Saudi Arabia	NESMA
160	Re-Location of the existing 110Kv Transmission Line from Madinah East BSP to Airport-II SS, Madinah City Network	Saudi Arabia	HAIF CO.
161	6MW Photovoltaic Power Plant	Saudi Arabia	CEPCO CO.
162	Construction of Al Marai 12MVA Hybrid PV Power Plant	Saudi Arabia	CEPCO CO.

Egypt Projects.

Sr.No.	PROJECT NAME	Country	Contractor
1	Construction of Tami El Amdid S/S 66/11 KV	Egypt	XD-EGMAC
2	Construction of Sohag Solar PV Plant 300MW & 220/33KV Substation	Egypt	Technology for Engineering Consulting Royal

Jordon Projects.

Sr.No.	PROJECT NAME	Country	Contractor
1	Construction 400kV QAIA GIS and extension of existing 132/33 kV substation	Jordon	SEPCO III
2	Construction of new AL- ZARQA Industrial City 132/33 kV Substation	Jordon	Xian Electric Engineering Co.Ltd
3	Construction of Jordan industry 100MW PV Solar Plant	Jordon	Complete Development Renewable Energy CCDRE

Iraq Projects.

Sr.No.	PROJECT NAME	Country	Contractor
1	Construction of 4 (four) 400kV GIS Substations.	IRAQ	AL-SEWEDY BSB
2	Mechanical Load Calculations for 132 kV & 400 kV Gantry Structures Hamudiya 400/132/11kV GIS Substation	IRAQ	SIEMENS ENERGY
3	Construction of 6.6KV Overhead Transmission line (OHTL) from WPE to GBC for PCIHBV, Garraf operations	IRAQ	SANA AL-AMAR COMPANY

Congo Projects.

Sr.No.	PROJECT NAME	Country	Contractor
1	Design of 35kV Medium Voltage OHTL	DRC	Power Generation Engineering and Services Company (PGESCO)



Meeeco Consultancy Company

Nigeria Projects.

Sr.No.	PROJECT NAME	Country	Contractor
1	Mamuda Bakery Factory in Nigeria	Nigeria	CLENSOU Nigeria Limited.
2	Mamuda Beverage Factory in Nigeria	Nigeria	CLENSOU Nigeria Limited.
3	Mamuda Beverage Factory in Nigeria	Nigeria	CLENSOU Nigeria Limited.

Spain Projects.

Sr.No.	PROJECT NAME	Country	Contractor
1	ZIV OPDS for 132kV and 380kV	Spain	ZIV

Australia Projects.

Sr.No.	PROJECT NAME	Country	Contractor
1	GE Brigalow Gas Peaking Plant	Australia	RMS Electrical Solutions



Meeeco Consultancy Company

Contact Us

MEECO Consultancy Group

84 Joseph Tito -New Nozha, Cairo, Egypt

P : (+2) 02 26235333 : Fax: (+2) 02 26228205

E : office@meeeco-consulting.com

W : www.meeeco-consulting.com

M: (+2) 01205745366



Meeeco Consultancy Company

9-Certificates



CERTIFICATE



**Management System as per
EN ISO 9001: 2015**

In accordance with TÜV AUSTRIA procedures, it is hereby certified that



Meeeco Consultancy Company

MEECO CONSULTANCY COMPANY

**84 Joseph Tito, New Nozha
CAIRO, EGYPT**

Applies a Quality Management System in line with the above Standard for the following Scope

**DESIGN AND ENGINEERING SERVICES FOR POWER GENERATION,
ELECTRICAL SUBSTATIONS, TRANSMISSION LINES, DISTRIBUTION
SYSTEMS, ELECTROMECHANICAL WORK, AND CIVIL WORKS.**

Certificate Registration No.: **20001260018208**

Valid until: **2029-03-03**



Maria Agapitou
Head of Management Systems & Products Certification Division

Certification Body
at TÜV AUSTRIA

Athens, 2026-03-04

This certification was conducted in accordance with TÜV AUSTRIA auditing and certification procedures and is subject to regular surveillance audits.

TÜV AUSTRIA HELLAS
429, Mesogeion Ave.
GR-153 43 Athens, Greece
www.tuvaustriahellas.gr
GEMI No: 1650201000



MS Certification
No. of Certificate 236



CePRK478_A1e Headquarters in Athens bear the responsibility of the Certification decision

ZERTIFIKAT | CERTIFICATE | CERTIFICADO | СЕРТИФИКАТ | 証明書 | 인증서 | شهادة | 証明書

Veröffentlichung nur mit Erlaubnis des TÜV AUSTRIA | The reproduction of this document is subject to the approval by TÜV AUSTRIA



Meeeco Consultancy Company

Electro Technique Arabia Co.

ETAC



الشركة العربية للكهرباء والتقنية

ايتاك

TO WHOM IT MAY CONCERN

This is to certify that M/S Middle East Engineering Consulting Office, have satisfactorily completed the Project “**Design and Engineering services for Construction of 33/13.8 kV S/S 7821 in Al Ghat**” awarded to them by M/s. Electro Technique Arabia Co. Ltd. (ETAC), vide Subcontractor Agreement, Dated 15th Oct 2014. The engineering work comprised mainly of complete Primary, Secondary, Civil and Mechanical scopes of the substation.

Deputy Executive Manager (ETAC)



Tel.: +966 1 2150701/02 /05- Fax 12150706
P. O. Box 66479 , -Riyadh 11576 - Saudi Arabia
C.R. 1010199071. COC. 147252

هاتف : 01 / 02 / +9661 2150705 - فاكس: +9661 2150706
صندوق بريد 66479 - الرياض 11576 - المملكة العربية السعودية
س.ر.ت. 1010199071 . العضوية: 147252



Meeeco Consultancy Company



DELTA Limited **دلتا المحدودة**
Limited Liability Company شركة ذات مسؤولية محدودة
(رأس المال ١٠٠٠٠٠٠٠٠٠٠٠ ريال سعودي)

M/s. Middle East Engineering Consulting Office.

4, Taha Hussain St. - Al- Nozha
Cairo, Egypt
Tel.: +20226205590
Fax: +20226205590

Subject: Appreciation for Good Engineering Service provided by MEECO

Dear Mr. Nasr Abdel-Qader,

We are writing this letter as a humble note of appreciation for the quality engineering service provided by your office staff for our project (Up-Grading of the Stand-By Power Station of the College of Medicine, King Khaled University Hospital (KKUH) at King Saud University).

We must say the correct and prompt support extended by your team was appreciable. They answered all our queries and were very polite and helpful throughout the calls and emails. You should certainly feel proud of such resources, which can bring in goodwill for the company.

We appreciate the way you have trained your staff and the way they are following their duty perfectly. Keep up the good work.

Once again thank you for the good engineering service and I wish the company a lot of success.

Sincerely,
Mohamed Abu Al Fotouh
Project Manager





Meeeco Consultancy Company

SIEMENS

TO WHOMSOEVER IT MAY CONCERN

This is to certify that M/S Middle East Engineering Consulting Office, have satisfactorily completed the Project "Design and Engineering services for 380/132KV S/S 9008" awarded to them by Siemens Limited Saudi Arabia, vide Work Award No. P.O # 4504772406, Dated 3th Oct 2013. The engineering work comprised mainly of complete interfacing, preparing control cable and termination schedule, preparing SCADA points list, modification of the existing drawings and relay setting, for 380/132KV S/S 9008.

Project Manager

Siemens Ltd.



Siemens Limited
Head Office, Gharnatah District (Jaafar Bin Mansour Road)
Thadeq Street, Al-Nakheel Compound
P.O. Box 9510, Riyadh 11423
Phone +966 (01) 277 8111 / 8222
Fax +966 (01) 277 8333
www.siemens.com.sa
Siemens Limited, Mixed Limited Liability Company
Capital Saudi Riyals 45,000,000 Fully Paid
C.R. 1010157290 - C.O.C. 100979

شركة سيمنس المحدودة
المركز الرئيسي، حي غرناطة (شارع جعفر بن منصور)
شارع ثادق، مجمع النخيل
ص.ب. ٩٥١٠، الرياض ١١٤٢٣
هاتف ٢٧٧٨١١١/٨٢٢٢ (-٠١) ٩٦٦+
فاكس ٢٧٧ ٨٣٣٣ (-٠١) ٩٦٦+
www.siemens.com.sa
شركة سيمنس المحدودة، شركة ذات مسؤولية محدودة مختلفة
رأس المال ٤٥,٠٠٠,٠٠٠ ريال سعودي مدفوعة بالكامل
س.ت. ١٠١٥٧٢٩٠ - ١٠٠٩٧٩ غ.ت



Meeeco Consultancy Company

SEPCO III Electric Power Construction Co., Ltd.
Add.: P.O.Box100 post code 13125 Hashimiyah Zarqa, Jordan
Tel: +962-777718968 Http:// www.sepco3.com



Our reference: QAIA-CDRE-SIII-24-CON-20-0001

Date: 22th Jan 2020

Reference:

Reply:

Subject: Regarding QAIA Project Completion Certificate for CDRE

Attn to: Ali Jalgif, CDRE Project Director

Dear CDRE Team,

This certificate to certify that **M/S Complete Development Renewable Energy (CDRE) and Middle East Engineering Consulting Office (MEECO)**, have satisfactorily completed the Project “Design and Engineering services for the **Construction of 400kV QAIA GIS and extension of existing 132/33 kV substation**” in Jordan awarded to them by **SEPCO III Hashemite Kingdom of Jordan**, vide Work Award as per Contract No. JO004-SS-FW-001-00 Dated 5th of May 2019. The engineering work comprised mainly of Complete secondary design for **400kV QAIA GIS and extension of existing 132/33 kV substation**.

Regards.

Yang Wenhui



Reviewed by

Electro Technique Arabia Co.



الشركة العربية للكهرباء والتقنية

ETAC

ايتاك

TO WHOM IT MAY CONCERN

This is to certify that M/S Middle East Engineering Consulting Office, have satisfactorily completed the Project "Construction of Information Technology and Communications Complex (ITCC)" awarded to them by M/s. Electro Technique Arabia Co. Ltd. (ETAC), vide work order# PO/1432, Dated 22nd April 2014. The engineering work comprised mainly of complete Relays setting study.

Deputy Executive Manager (ETAC)





Meeeco Consultancy Company

Electro Technique ArabiaCo.



الشركة العربية للكهرباء والتقنية

ETAC

ايتاك

TO WHOM IT MAY CONCERN

This is to certify that M/S Middle East Engineering Consulting Office, have satisfactorily completed the Project "Construction of 132/13.8KV Waad Alshamal Substation" awarded to them by M/s. Electro Technique Arabia Co. Ltd. (ETAC), vide work order# PO/1374/1401, Dated 14th April 2014. The engineering work comprised mainly of complete HVAC Design work for the substation.

Deputy Executive Manager (ETAC)



Tel.: +966 1 2150701/02/05- Fax 1 2150706
P. O. Box 66479 , -Riyadh 11576 - Saudi Arabia
C.R. 1010199071. C.O.C. 147252

هاتف : 01 02/ 05/ 2150705/ +9661 2150706 - فاكس : +9661 2150706
صندوق بريد 66479 - الرياض 11576 - المملكة العربية السعودية
س.ر.ت. 1010199071. العضوية: 147252



Meeeco Consultancy Company



TO WHOMSOEVER IT MAY CONCERN

This is to certify that M/S Middle East Engineering Consulting Office, have satisfactorily completed the Project "Steel Structure Design and short circuit force calculation for Extension of Al Hawiyah 110/13.8KV s/s, Taif" awarded to them by Arabian BEMCO Contracting Co. LTD, vide Work Award Service contract BC125/4612, Dated 25th June 2014. The engineering work comprised mainly of Steel Structure design calculation and drawings and preparing analysis file for each structure using STAAD Pro software for Al Hawiyah 110/13.8KV s/s, Taif.

Substation projects Dep. Manager (Arabian BEMCO Contracting Co. LTD)



BEMCO is Most Competitive, Best Performing & Highest Quality Co.

Limited Liability Co., Paid Capital (SR. 500, 000, 000)
C.R.: 4030019266 - P.O.Box 3143, Jeddah 21471 - K.S.A
☎ : +966 12 227 7010 - Fax : +966 12 660 9432
E-mail: arabian@bemco-ipp.com



شركة ذات مسؤولية محدودة رأسمالها (٥٠٠,٠٠٠,٠٠٠) مدفوع بالكامل
س.ت.٤٠٢٠١٩٢٦٦ - ص.ب.٣١٤٣ جدة ٢١٤٧١ - المملكة العربية السعودية
☎ : +٩٦٦ ١٢ ٢٢٧ ٧٠١٠ - فاكس : +٩٦٦ ١٢ ٦٦٠ ٩٤٣٢
E-mail: arabian@bemco-ipp.com



Meeeco Consultancy Company

SIEMENS

TO WHOMSOEVER IT MAY CONCERN

This is to certify that M/S Middle East Engineering Consulting Office, have satisfactorily completed the Project "Steel Structure Design for SVC at Al Kharj 132/13.BKV S/S 8712" awarded to them by Siemens Limited Saudi Arabia, vide Work Award No. P.O # 4504814039, Dated 28th Oct 2013. The engineering work comprised mainly of Steel Structure design calculation and drawings and preparing analysis file for each structure using STAAD Pro software for SVC at Al Kharj 132/13.BKV S/S 8712.


Project Manager (Siemens)



Siemens Limited
Head Office
Business Gate, Building C-1
Airport Road, Quraysh District
P.O. Box 9518, Riyadh 11433
Phone: +966 (0)11 277 8171
Fax: +966 (0)11 277 8354
www.siemens.com.sa
Siemens Limited, Mixed Limited Liability Company
Capital Saudi Riyals 45,000,000 Fully Paid
C.R. 1030157290 - C.O.C. 100579

الوكالة السعودية لسيمنس
القرىء الرئيسى
الوكالة الاقتصادية، مبنى ج 1
طريق المطار - الرياض
ص.ب. 9518، الرياض 11433
هاتف: +966 (0)11 277 8171
فاكس: +966 (0)11 277 8354
www.siemens.com.sa
شركة سيمنس المحدودة، شركة مساهمة مختلطة
رأسمالها الكامل 45.000.000 ريال سعودي مدفوع بالكامل
ص.ب. 9518، الرياض 11433 - ج.ع. 100579



Meeeco Consultancy Company



TO WHOMSOEVER IT MAY CONCERN

This is to certify that M/s Middle East Engineering Consulting Office (MEECO), have satisfactorily completed the Project "TSHIPURA 10MW PV POWER PLANT OVERHEAD TRANSMISSION LINE DESIGN" awarded to them by Power Generation Engineering and Services Company (PGESCO), vide Service contract No. 10155-9-HC4-CY05-00001, Dated December 21, 2011. The engineering work comprised mainly of Preparing complete Electrical and Civil/Foundation Design of 33KV Medium Voltage OHL in Democratic Republic of Congo (DRC).

Assani Sembol
Renewable Energy Business Line Director
Power Generation Engineering and Services Company (PGESCO)



41, Al-Kalam Avenue, Central District,
New Cairo, Cairo, Egypt. Post Code: 11555
Tel: +907 7018 0546 Fax: 22215 6700
E-mail: 202 2027 0071

Overseas Branches: No. 076497
Tel: and No. 224-204-076
E-mail: Contactus@pgesco.com
www.pgesco.com